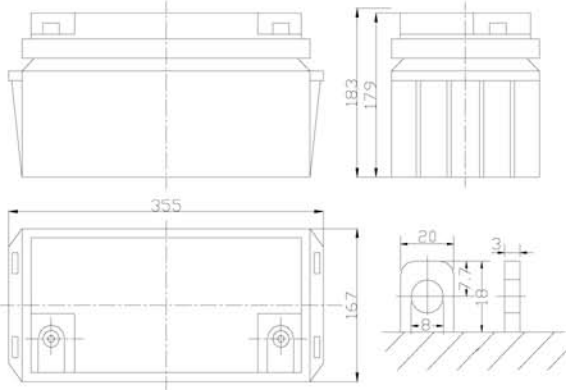


## VM Series SLA Battery



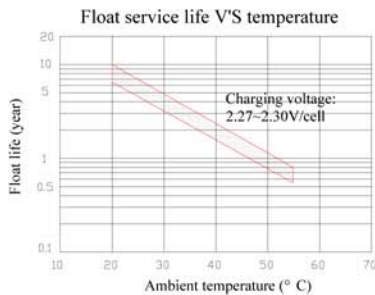
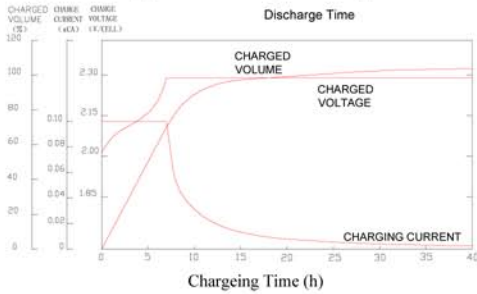
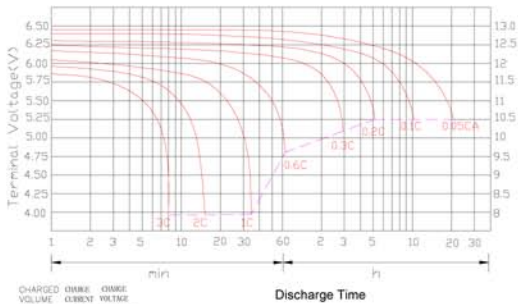
● Specifications

Nominal Voltage	12V	
Rated Capacity	65Ah	
Dimensions	Total Height	7.20 inches (183mm)
	Height	7.05 inches (179mm)
	Length	13.98 inches (355mm)
	Width	6.57 inches (167mm)
Approximate Weight	45.4 lbs (20.6kg)	

● Characteristic

Capacity 77°F(25°C)	20h rate	68.2Ah
	10h rate	65.0Ah
	5h rate	55.2Ah
	1h rate	39.0Ah
	15 min rate	27.3Ah
Internal Resistance	Full Charged Battery 77°F(25°C)	Approx. 6m Ω
Capacity Affected by Temperature (20h rate)	104°F(40°C)	102%
	77°F(25°C)	100%
	32°F(0°C)	85%
	5°F(-15°C)	65%
Self-Discharge 68°F(20°C) (Capacity after)	3 month storage	90%
	6 month storage	80%
	12 month storage	60%
Max. Discharge Current 77°F(25°C)	650A(5s)	
Terminal	T5/T12	
Charge (Constant Voltage, 25°C)	Cycle	14.4~14.7V(-24mV/°C) max. current: 19.5 A
	Float	13.6~13.8V(-18mV/°C)

DISCHARGE CHARACTERISTICS AT 25° C(77° F)



Constant Current Discharge Characteristics (A, 25°C)

F.V/TIME	5min	10min	15min	30min	60min	3h	5h	10h	20h
9.60V	199	139	105	65.0	41.0	16.7	11.7	6.65	3.45
10.2V	189	132	101	62.4	39.4	16.5	11.5	6.60	3.45
10.5V	178	124	95.8	59.3	37.4	16.2	11.3	6.50	3.40

Constant Wattage Discharge Characteristics (Watt, 25°C)

F.V/TIME	5min	10min	15min	30min	60min	3h	5h	10h	20h
9.60V	2088	1498	1153	729	467	196	138	79.4	41.4
10.2V	1984	1423	1109	700	449	194	136	78.8	41.4
10.5V	1965	1338	1052	665	426	191	134	77.6	40.8